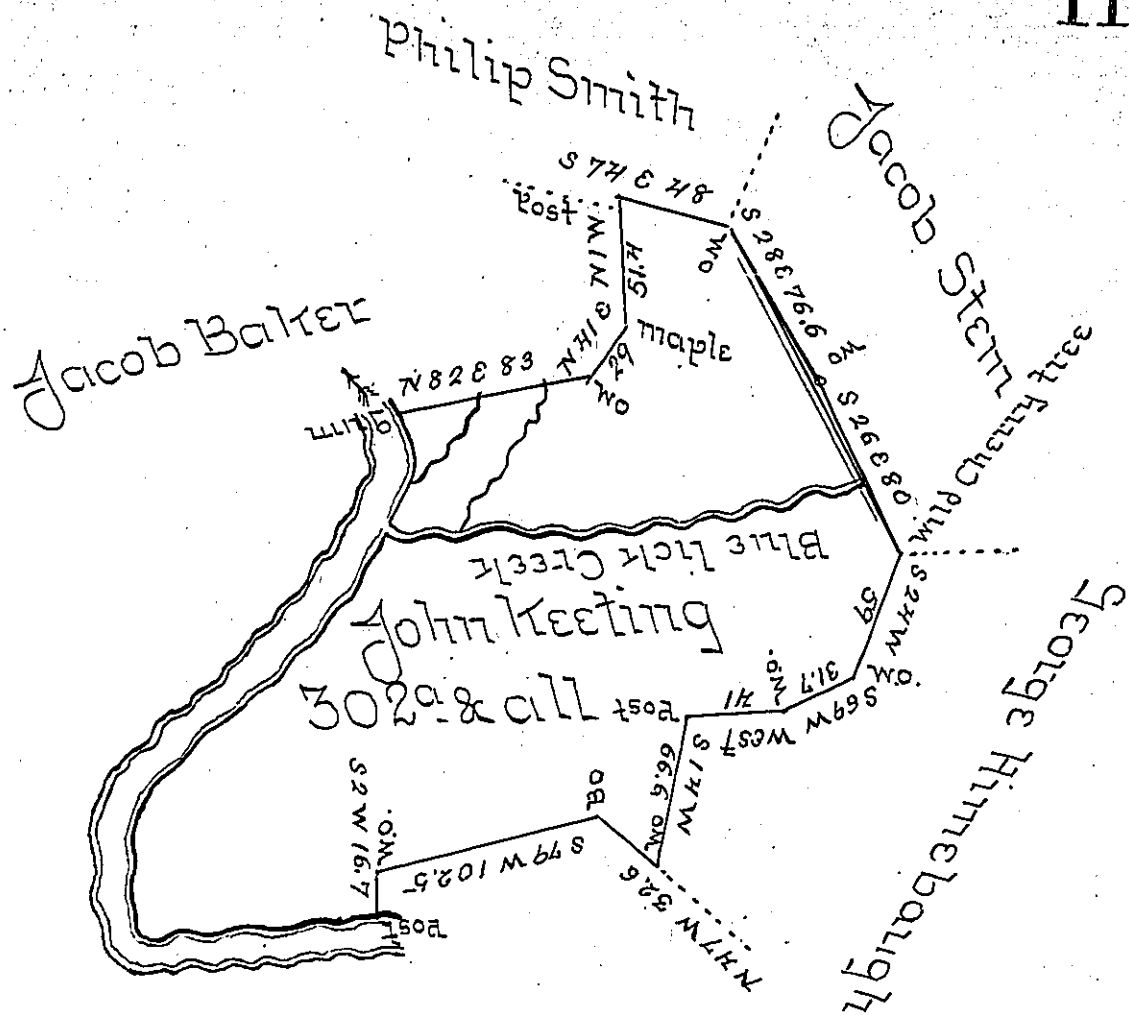


Down the River
 1771
 N 28 W 18 ps to Plum
 N 21 E 25
 N 54 E 101
 N 55 1/2 E 65
 N 51 E 24
 N 27 E 19
 N 15 E 13
 N 2 E 24
 N 3 W 15
 S 59 W 73
 S 55 W 32



The courses and Distances
 down Castleman's River
 from Post
 Abraham Floyd

Situate on the East side of Castleman's River and on both sides of Blue Lick Creek in Brothers Valley Township Somerset County and surveyed the 22^d day of February 1799 ~~and~~ by Alexander McClean Esquire late U.S. in pursuance of a Warrant Dated the 10th day of March 1798 Certified this 5th day of September 1801

by
 John McClean U.S.

To Samuel Cochran Esquire
 Surveyor General

IN TESTIMONY that the above is a copy of the original remaining on file in the Department of Internal Affairs of Pennsylvania, made conformably to an Act of Assembly approved the 16th day of February, 1833, I have hereunto set my Hand and caused the Seal of said Department to be affixed at Harrisburg, this twenty fourth day of August 1905.

Geacel Brown
 Secretary of Internal Affairs.